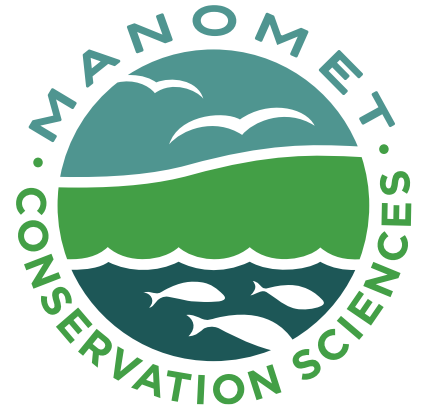


2023

Annual Report



MANOMET IN FOCUS





Manomet is a science-driven conservation organization established more than 50 years ago to track and band birds. Today, we have teams in the Western Hemisphere focused on improving the health of flyways and ecosystems challenged by climate change and human activities. Our goals are to:

reverse the decline of shorebirds

promote coastal resilience

educate and empower the next generation of conservationists



Dear Friends,

We are pleased to present Manomet's 2023 Annual Report. Manomet has accelerated its work this past year in ways we never imagined. Our more refined mission has led to fewer, more focused priorities, described in our 2021-2024 Strategic Priorities document, allowing us to achieve formidable results. Our monitoring and tracking of species and habitat provide the latest information for conservationists and other stakeholders. New Manomet team members in Texas, Louisiana, Maine, Cape Cod, and throughout Latin America are working with our incredible team of experienced scientists to drive these results.

We think you will be particularly impressed with our list of partners in this report. We rely upon substantive relationships with trusted organizations to broaden our impact, and each partner we work with is a valued part of the Manomet community.

One of our notable achievements this past year is gathering significantly more fine-scale geographic and altitudinal data from accelerating the application of satellite transmitters on shorebirds. The technology gives us new knowledge of shorebird migration patterns for the Magellanic Plover, Ruddy Turnstone, and Whimbrel, enabling us to pinpoint conservation action. And the collective progress we've seen in recovering the American Oystercatcher has sparked a broader effort to restore shorebird populations for more species representing broader geographies.

We are also focused on understanding mudflat dynamics, the shifting abundance of shellfish and intertidal invertebrates, and the changes in fish species as the waters of the U.S. Atlantic Coast warm. Our research yields insights that help people who rely on these resources make informed decisions about their livelihoods. It also provides valuable information on other bodies of water vulnerable to climatic warming.

Finally, our education work in Massachusetts and across all of our programming in the Western Hemisphere highlights our commitment to reach populations that have been historically underrepresented in ornithology and conservation.

In this report, we are thrilled to provide a clear view of what we have accomplished with your support over the past year. We are so proud of the hard work of the entire Manomet team, and we thank you for your continued partnership.

Nancy Dempze
Board Chair

Lizzie Schueler
President



A Groundbreaking Study

In February of 2023, Manomet scientists Dr. Stephen Brown, Brad Winn, emeritus biologist Brian Harrington, Environment and Climate Change Canada's Dr. Paul A. Smith, with six other colleagues published a study in the journal *Ornithological Applications*, which unveiled findings derived from a study that reviewed 40 years of International Shorebird Survey data. The big, and disturbing, takeaway: since 1980, shorebird species along the Atlantic Coast of the U.S. and Canada have experienced steep declines, with many losing more than 50% of their population over the last three decades.

From 1980-2019, scientists and volunteers with Manomet's International Shorebird Survey, the Atlantic Canada Shorebird Survey, and the Ontario Shorebird Survey monitored and documented the activity of 28 different shorebird species across North America. The research reveals that during that span of nearly 40 years, 26 of the 28 shorebird species analyzed were found to be declining with strong evidence that 13 of those species are now declining even faster than previously recorded.

Manomet launched a call to action for state and federal wildlife agencies and conservation organizations to unite to reverse these declines. Our researchers and our partners asked the federal government to invest in programs that have proven successful, (note the American Oystercatcher story later in this report), and to establish additional investments in conservation efforts to prevent more birds from being added to the Endangered Species list.

40 years

of data analyzed that determined 26 of the 28 shorebird species were found to be declining

MORE DETAILS:
The Scientific Abstract



Coalitions for Shorebird Conservation: A Collaborative Approach

Recognizing the urgent need to safeguard shorebird populations, Manomet understands that effective conservation requires a strategic and collaborative effort. That is why in early 2020, we started the 'Coalitions for Shorebird Conservation' initiative. This collaborative approach brings together diverse stakeholders to reduce threats to shorebirds at priority sites throughout the Western Hemisphere.

Through our Coalitions approach, we strive to empower local partners, enhance site management and protection, assess improvements in habitat quality and quantity by monitoring shorebird responses to conservation efforts, foster cross-sector partnerships, expand the donor base, and highlight the importance of targeted conservation actions at priority sites as a key component of restoring shorebird populations.

As we concluded 2023, the Coalitions approach has been implemented across 17 sites, ranging from Cape Cod to Tierra del Fuego, including new sites in Texas, Suriname, and northern Brazil. Notable achievements since its inception include:

- Targeted management actions across 110,000 acres of protected areas, with beneficial practices extending to more than 741,000 acres.

- Beneficial practices for shorebirds applied on 104,000 acres of working lands — including rice, crawfish, shrimp, and salt farms, as well as livestock ranches.
- Through new or restored protection measures, we've safeguarded 229,000 acres of vital shorebird habitat.
- More than 1,600 individuals are helping to ensure better stewardship of crucial shorebird habitats across the Western Hemisphere.
- A community of 130 organizations are actively engaged in our Coalitions work to date.

Our 'Coalitions for Shorebird Conservation' initiative has galvanized a collaborative effort spanning the Western Hemisphere, resulting in tangible achievements. As we move forward, our commitment to reverse shorebird populations declines remains unwavering, guided in part by the success and momentum of our Coalitions approach.

MORE OR LESS? How We Count Shorebirds





1,600

volunteers, producers, and partners helped implement enhanced stewardship of critical shorebird habitat across the Western Hemisphere





American Oystercatcher: Recovery Success

The 23rd Annual Meeting of the American Oystercatcher Working Group convened in Plymouth this past year to take stock of progress to date. The initial goal of the American Oystercatcher Recovery Program, a consortium of 22 partner groups coordinated by Manomet's Senior Shorebird Scientist Dr. Shiloh Schulte, was to increase the numbers by 30% in ten years.

In the fall of 2023, Dr. Schulte and team members conducted an aerial survey of the Atlantic and Gulf Coast states, the fourth complete survey since 2003. Combining aerial monitoring and on-the-ground confirmation tracking, the surveys revealed an even more significant increase in the populations over 15 years: an estimated 45% increase in the American Oystercatcher population along the U.S. Atlantic, and Gulf of Mexico coasts since 2008, and nearly 20% in just the last five years. The increase is noteworthy and a testament to the positive impact that concerted and focused efforts by the Working Group can have to recover this formerly declining species.

How did this happen? Dr. Schulte explains that the key was to have baseline population data and then to ask focused questions and pinpoint the limiting factor to shorebird survival. "We went deep into the data and found the problem was with the 'hatching and fledging' stage of the Oystercatcher's life cycle. The research pointed to a solution we were able to then apply to the field – remove the disturbance factors – and see real change." The success of the continued recovery will depend on steady vigilance and funding into the future, but this work has proven to be a critical example of what one model of a successful shorebird conservation program can look like. It has become a framework to replicate: we are currently growing the work of the Whimbrel working group by launching a new full life cycle Road to Recovery initiative for Whimbrel, modeled after the American Oystercatcher initiative.

45%

increase in American Oystercatcher population over 15 years

**MORE RECOVERY WORK:
Whimbrels**



Saline Lakes Serve as a Springboard for Change

As migratory shorebirds make their long journeys, they depend on resting and refueling at wetlands including saline lakes, which provide ideal stopovers full of nutrient-rich invertebrates. However, the last 100 years has seen a dramatic decline in saline lake water levels due to climate change and agricultural and urban use. In response to these challenges, Manomet's Flyways team has been working with partners to call attention to the conservation status of saline lakes throughout the hemisphere. These focused efforts helped support the declaration of a new national park at Argentina's Laguna Mar Chiquita, a Western Hemisphere Shorebird Reserve Network site of hemispheric importance. The official designation of the Ansenza National Park and Reserve secures its conservation in perpetuity, and has served as a springboard for a new partnership between Manomet and Fundación Líderes de Ansenza, a local nonprofit organization from Mar Chiquita.

To maintain momentum in the conservation of the region, Manomet and Fundación Líderes de Ansenza developed the "Ambientalia Experiencia" (Environmental Experience) program to engage youth in conserving Laguna Mar Chiquita. The program has grown to include chapters across the hemisphere, including at Mar Chiquita's sister saline lakes, Mono Lake in California, and the Great Salt Lake in Utah. Participants learn and practice environmental leadership, conservation planning, and project design and implementation. More than 30 targeted actions have been completed by participants, addressing issues ranging from the creation of local legislation to the design and construction of public spaces in nature. To date, Experiencia Ambientalia has trained over 500 youth.

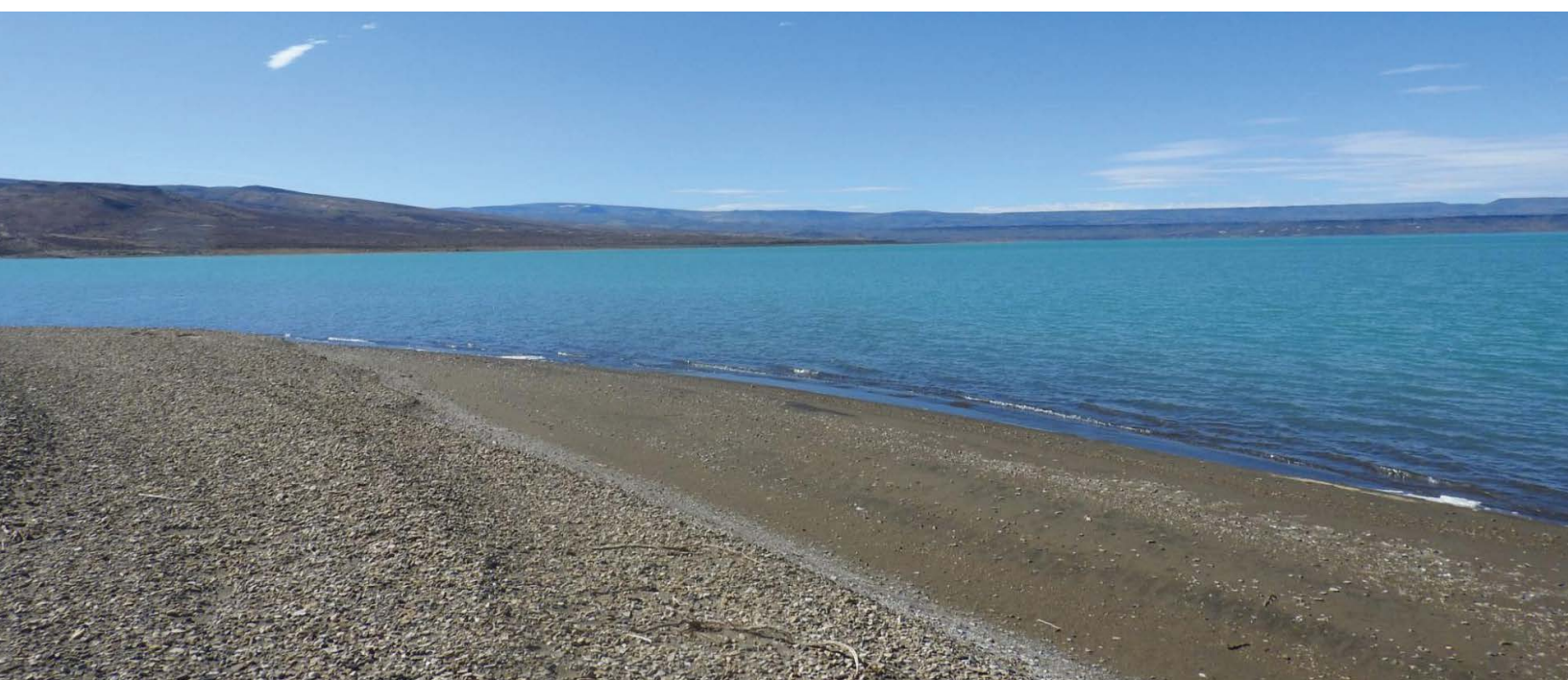
505 students

trained in environmental leadership, conservation planning, and project design and implementation with Experiencia Ambientalia

MORE LAGUNA MAR
CHIQUITA: A Photo Essay







Partnering in Patagonia to Protect the Magellanic Plover

Manomet researchers joined our partners, Centro de Rehabilitación de Aves Leñadura (CRAL) and Asociación Ambiente, to put satellite tags on nesting pairs of Magellanic Plover. One of the rarest species of shorebirds in the Americas, and perhaps even the world, Magellanic Plovers occur only in southern Argentina and Chile, breeding on the shores of shallow lagoons in the Patagonian steppe, and wintering in coastal estuaries. This recent tracking effort will help us learn more about the areas that are important during migration and is timely, given the species' low population size. Binational surveys supported by Manomet and conducted by Ambiente Sur and the CRAL between 2021 and 2023, showed the population to be fewer than 500 individuals. These concerning numbers have triggered a reassessment of the plover's conservation status at the global level.

The status evaluation led by BirdLife International in 2023 resulted in uplisting the species from "Near Threatened" to "Vulnerable" on the International Union for Conservation of Nature (IUCN) Red List of Threatened Species. The increased conservation concern of the species, combined with its very small population size, also triggered a proposal by the governments of Argentina and Chile – supported by scientific data provided by Ambiente Sur, CRAL, and Manomet – to move the species up from Appendix II to Appendix I of the Convention on the Conservation of Migratory Species. Appendix I listing requires host governments to take steps to conserve this species. Manomet and our partners celebrate the inclusion of the Magellanic Plover in Appendix I as a critical global step toward recovery and the conservation of this rare species.

17
Magellanic Plover nests
protected in Patagonia

MORE ABOUT MAGELLANIC PLOVERS: Threats, Migration Routes, and More



Sea Level Rise: Impacts on Mudflat Habitat and Harvester Livelihoods

Mudflats provide critical habitat for many species of shellfish, crabs, fish, and migratory birds and are important socially, culturally, and economically for coastal communities. The impacts of climate-induced sea level rise to mudflat habitat – and the rate at which that habitat will be lost – has been a major gap in our understanding of climate change impacts to coastal habitat. Each year, Manomet engages with dozens of shellfish harvesters to listen and learn about how climate change is impacting their livelihoods and where there are gaps in our understanding of those impacts. In recent years, sea level rise impacts to mudflat habitat and shellfish resources has been a commonly cited concern.

In 2023, Manomet launched focused efforts to understand, document, and address the impacts of sea level rise to mudflat habitat and harvester livelihoods. This includes documenting many forms of knowledge such as harvester observations, drone survey data, Light Detection and Ranging (LiDAR) data, and archival imagery, which combined provide a comprehensive overview of changes to mudflat habitat over the past 50-70 years. One of the most rewarding aspects of this work has been bringing together diverse partners (including industry stakeholders, scientists,

community members, and fisheries managers) to share stories, experiences, and perspectives that may have largely been overlooked in the past. Harvesters have highlighted significant changes in the landscape, such as the diminishing sea ice in recent years leading to increased erosion and sediment loss. Additionally, there has been a rise in the frequency and intensity of rain events, resulting in substantial fluctuations in sediment and the loss of shellfish habitat. Drone surveys have documented fine scale elevation data that we will use to project the advancement of the low tide line and loss of intertidal habitat under different sea level rise scenarios.

This collective and wide-ranging data gathering was important foundational work. Looking forward, we will use all facets of this data to develop hands-on tools and resources for towns to prepare for climate change impacts and to support adaptive management practices for Maine's shellfish fisheries.

MORE ON MANOMET'S CLIMATE IMPACT RESEARCH: [River Herring](#)





98%
loss

of mudflat habitat with
sea level rise of 3.9 feet
estimated by 2100





416
participants

attended
coastal
restoration
workshops
hosted by
Manomet
in 2023



Creating Shorebird Habitat from Dredged Materials

Our coastal saltmarshes and intertidal ecosystem provide habitat for many species — including fish and shorebirds — and also act as an important buffer between rising tidewaters and communities built along the coast. By 2050, the U.S. Army Corps of Engineers predicts sea level rise of 15.19 to 16.62 inches for the coast from North Carolina to Georgia, a geographic area of focus for our Georgia Bight Shorebird Conservation Initiative. As sea level rises, this important resource for birds, fish, and people will be underwater. Critical habitat that migrating shorebirds depend on will be lost to future generations, unless people step in with solutions to help restore eroding land along the coast.

There is a growing movement to utilize dredge material for beneficial use to ease coastal erosion and provide habitat to wildlife. The U.S. Army Corps of Engineers (USACE) dredges approximately 200 million cubic yards of sediment annually from the nation's inlets, ports, and harbors for navigation and commerce purposes. Historically, much of that material has been discarded either inland or deep offshore. However, a new USACE goal to beneficially use at least 70% of dredged materials by 2030 has proven to be an opportunity for our collective coastal restoration efforts.

Manomet launched its Coastal Zone Initiative in 2021, and staff from Manomet, Coastal States Organization, and the USACE are working closely with other federal and state agencies, nonprofit organizations, and academic partners to identify restoration opportunities. Currently Manomet is working in eight states, and in late 2023 hosted workshops that brought together partners in North Carolina, South Carolina, and Georgia to identify areas for restoration. 116 participants from 46 different organizations from across the US attended the in-person workshops, aggregating data and their expertise to identify 138 coastal restoration opportunity areas. Additionally, over the course of the year, we had 300 participants attend our webinars. These collaborations this past year kickstarted efforts to build capacity to identify coastal restoration opportunity areas, transfer knowledge on best restoration practices and methods, and work to develop a robust pipeline of projects for future funding opportunities.

MORE HABITAT: Digging Deeper into Dredging



Broadening Access: Ornithology Careers Institute

In June of 2023, Manomet hosted its second annual Ornithology Careers Institute (OCI). OCI is a week-long field skills training experience for students and early career professionals from communities historically excluded from ornithology. In early 2023, a group of more than 200 ornithologists from Latin America published a high-profile paper in *Ornithological Applications* calling for the dismantling of systemic exclusion and historical barriers for ornithologists from Latin America. In consultation with Latin American colleagues and following the road map in this paper, Manomet made the decision to open OCI 2023 up to college students and early career ornithologists from Latin America.

OCI 2023 was led by scientists from across the hemisphere: Evan Dalton, Manomet Observatory Director (based at Manomet Headquarters in Plymouth, Massachusetts), and Salvadora Morales, Manomet Shorebird Conservation Specialist (based in Nicaragua), with support from Senior Shorebird Conservation Specialist Arne Lesterhuis (based in Paraguay). We were also fortunate to recruit Dr. Marie Djosetro from the University of Suriname to volunteer her time as a mentor and instructor for the sessions. In this year's program, we hosted an enthusiastic group of participants from Argentina, Chile, Suriname, and Ecuador, who lived in the bird banding quarters in the historic Widewater building and did extensive fieldwork onsite. With this small but mighty program, Manomet has built a powerful model to support the careers and raise the profiles of ornithologists from historically underrepresented groups, including the global south. OCI has strengthened Manomet — and will continue to do so in the future — helping us build relationships with talented colleagues and future partners working in regions of the world that are critical for bird conservation.

3,122 birds

banded in the Trevor Lloyd-Evans Banding Lab in 2023

**MORE FROM MANOMET
OBSERVATORY: Top 7 Bird
Records of 2023**







Leading the Way Together in Brockton

How do people become environmental stewards? At Manomet, we are committed to education and community engagement as critical pillars of our conservation work, particularly in communities that have been historically excluded from conservation.

Brockton, Massachusetts is an extremely diverse city and environmental justice community that faces well-documented economic, environmental, and educational challenges. In Brockton, Manomet and its partner Wildlands Trust have launched the Resilient Brockton Initiative, a broad-ranging and multi-faceted collaboration focused on inspiring environmental stewardship by improving access to nature and empowering the next generation of conservationists.

The Resilient Brockton Initiative began in D.W. Field Park in 2022, Brockton's largest green space and the centerpiece of Wildlands Trust's efforts to improve access to nature across the city. Manomet supports this work with a targeted collective of environmental monitoring and education programs. In 2023, Manomet launched Brockton Kids Lead the Way, a partnership with Wildlands Trust and Brockton Public Schools to design and install outdoor learning spaces at Brockton Elementary Schools and then provide resources, curricular materials, and teacher training. Brockton youth are a key part of both of these initiatives through Green Team, a conservation jobs training program for high school students co-led by Manomet and Wildlands Trust. We put Green Team students to work building the outdoor learning spaces at elementary schools and making improvements to green spaces across the city. And the Brockton Urban Heat Island campaign is another participatory science project that had volunteers out measuring urban heat on a hot day in summer 2023, helping the City of Brockton target its tree planting and green spaces work.

The Resilient Brockton Initiative is a comprehensive and community-based case effort to empower environmental stewardship in a chronically underserved city. Why is Manomet investing so heavily in a single city? We believe the Resilient Brockton Initiative can serve as a model and a case study that can be replicated, directly or indirectly through partnership, across the areas where we work.

1,277

Brockton students

served in 2023, the Resilient Brockton Initiative's kickoff year

MORE ABOUT OUTREACH PARTNERSHIPS: Manomet on the Esplanade



MANOMET FIRSTS

2023 Shorebird Workshop held in the Amazon: counts included 6 resident species, 21 North American-breeding species, and 21,000+ shorebirds in total

Massachusetts Shorebird Blitz: 89 staff and volunteers counted 73,000+ shorebirds of 29 species at 115 sites over 9 days

Nature trail built and dedicated to Kathleen (Betty) Anderson, Manomet's founder and first President

Small Grants for Neotropical Shorebird Conservation awarded to 5 early-career conservationists in Chile, Argentina, Venezuela, Peru



3.5 million

Acres of shorebird breeding habitat successfully surveyed in the Teshekpuuk Lake Special Area in the Arctic

41,000

Hours of bird recordings captured by Manomet scientists and partners in 2023 in the Arctic Program for Regional and International Shorebird Monitoring (PRISM), which equals 4.7 years of recordings

1

Whimbrel in the Arctic named Manomet

4,309

Birds recorded or banded at the Trevor Lloyd-Evans banding lab in MA

119,795

Horseshoe crabs rescued in the "reTURN The Favor" campaign in 2023 co-led by WHSRN

2023 Hemispheric Impact: Researching, Monitoring, Recording

7

Priority species for which Manomet took lead role in flyway-scale efforts to safeguard habitat, reduce threats, monitor populations, and conduct research for: *rufa* Red Knot, Buff-breasted Sandpiper, Hudsonian Godwit, Wilson's Phalarope, Whimbrel, Lesser Yellowlegs, and Magellanic Plover

84%

Increase in total citations of Manomet scientists' open science work worldwide

281

Scientific papers available for free in 2023 on Manomet digital archive, as a commitment to the practice of open science

661

Number of bird species recorded in Manomet's 24 hour Bird-A-Thon in Argentina, Canada, Colombia, Ecuador, Israel, Nicaragua, Paraguay, and the U.S.

60th

Year of migratory songbird data compiled by Manomet Observatory staff and volunteers since 1963

250,000

Miles of Whimbrel migration tracked across the Western Hemisphere using satellite transmitters

15,000

Hours spent surveying by International Shorebird Survey volunteers throughout North and South America

75

Blue crabs tagged in Maine; 210 Blue crab sightings to date observed and logged on online dashboard by community scientists

35

Temperature loggers deployed in Maine waters to monitor rising temperatures and its effects on zooplankton

12.2 million

River herring counted by volunteers and staff on the data dashboard of the Gulf of Maine River Herring Network, a joint venture by Manomet and Maine Center for Coastal Fisheries

78

Number of Maine municipalities influenced by a 2023 law (designed by a Manomet-led coalition) codified to reduce barriers to wild marine stock enhancement

17

Marinas and boat ramps that installed shorebird habitat signage for public education (GA, SC)

44

Ecotourism guides certified through the Coastal Awareness and Responsible Ecotourism (CARE) program, providing tools to implement low disturbance practices for water-based Georgia tourism

8

Number of states in which we launched the Coastal Zone Initiative: DE, GA, MA, ME, NC, NJ, SC, VA



500,000
people

reached on Manomet's social media platforms, connecting people across the globe with Manomet's work

17

Magellanic Plover nests protected with exclosures in Patagonia

197,849

Number of acres represented by the 5 new sites added to the Western Hemisphere Shorebird Reserve Network (WHSRN) in Argentina, Bahamas, Chile, Honduras, Peru



79%

growth in Manomet's operational budget from FY20 to FY23

10

Hours scientists spent waiting for Buff-breasted Sandpipers to activate a wisternet trap in Uruguay coastal lagoons

Financials

STATEMENT OF FINANCIAL POSITION

September 30, 2023

Assets:

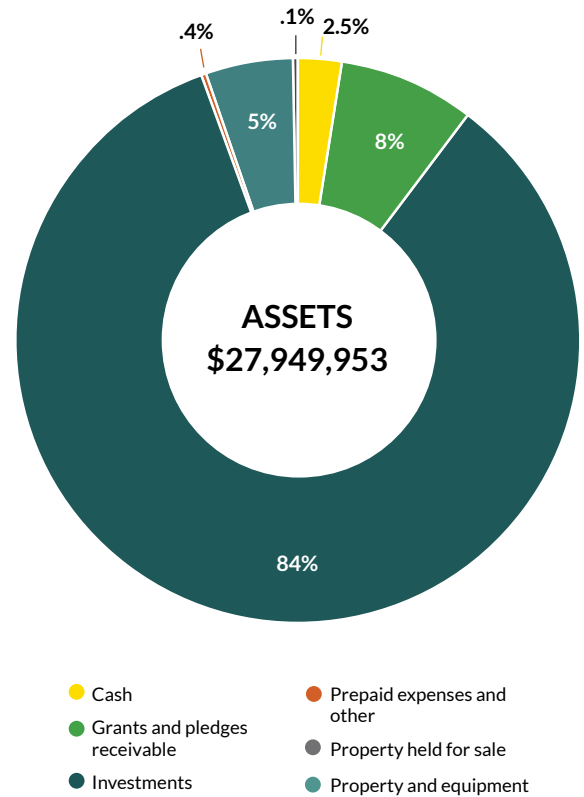
Cash	\$661,532
Grants and pledges receivable	2,353,944
Investments	23,454,535
Prepaid expenses and other	104,580
Property held for sale	24,474
Property and equipment	1,350,888
Total assets	<u>\$27,949,953</u>

Liabilities and Net Assets:

Liabilities:	
Accounts payable and accrued expenses	\$378,169
Conditional grant advances	41,913
Total liabilities	<u>420,082</u>

Net Assets:

Without donor restrictions:	
Operating	548,172
Board designated endowment	3,160,368
Property and equipment	1,375,362
	<u>5,083,902</u>
Without donor restrictions	22,445,969
Total Net Assets	<u>27,529,871</u>
Total Liabilities and Net Assets	<u>\$27,949,953</u>



STATEMENT OF FUNCTIONAL EXPENSES

For the year ended September 30, 2023

	PROGRAM SERVICES	GENERAL AND ADMINISTRATIVE	FUNDRAISING	TOTAL
Personnel and related expenses:				
Salaries	\$2,293,330	\$437,600	\$202,189	\$2,933,119
Payroll taxes and fringe benefits	555,003	105,902	48,931	709,836
Total personnel and related	<u>2,848,333</u>	<u>543,502</u>	<u>251,120</u>	<u>3,642,955</u>
Non-personnel expenses:				
Professional fees and development	1,807,748	213,738	17,133	2,038,619
Travel	481,949	1,099	-	483,048
Office and other supplies	130,112	221,542	-	351,654
Depreciation	46,308	78,849	-	125,157
Equipment	30,790	34,803	-	65,593
Insurance	23,321	39,708	-	63,029
Bank charges and fees	-	34,488	-	34,488
Miscellaneous	10,148	-	-	10,148
Bad debt	4,400	-	-	4,400
Advertising	-	3,390	-	3,390
Total non-personnel expenses	<u>2,534,776</u>	<u>627,617</u>	<u>17,133</u>	<u>3,179,526</u>
Total expenses:	<u>\$5,383,109</u>	<u>\$1,171,119</u>	<u>\$268,253</u>	<u>\$6,822,481</u>

STATEMENT OF ACTIVITIES

For the year ended September 30, 2023

Operating Revenue and Support:

Grants and contributions, without donor restrictions	\$2,863,109
Grants and contributions, with donor restrictions	2,101,541
Investment return designated for current operations	1,388,572
Interest and other income	67,636
Total operating revenue and support	6,420,858

Operating Expenses:

Program services	5,383,109
General and administrative	1,171,119
Fundraising	268,253
Total operating expenses	6,822,481

Change in net assets from operations (401,623)

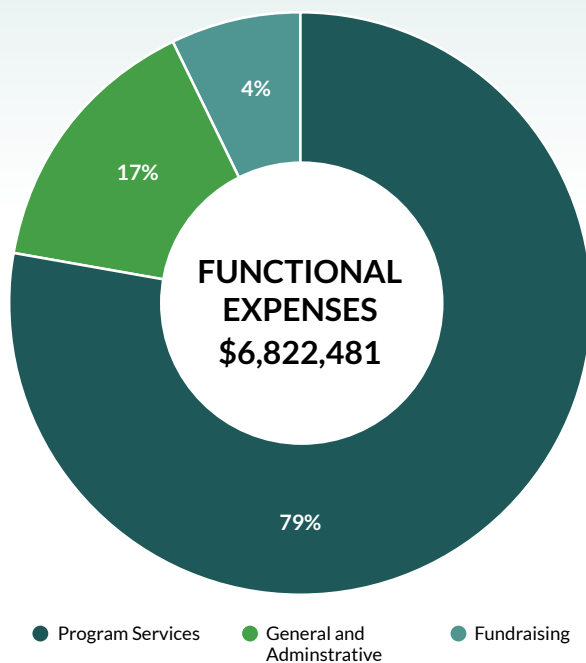
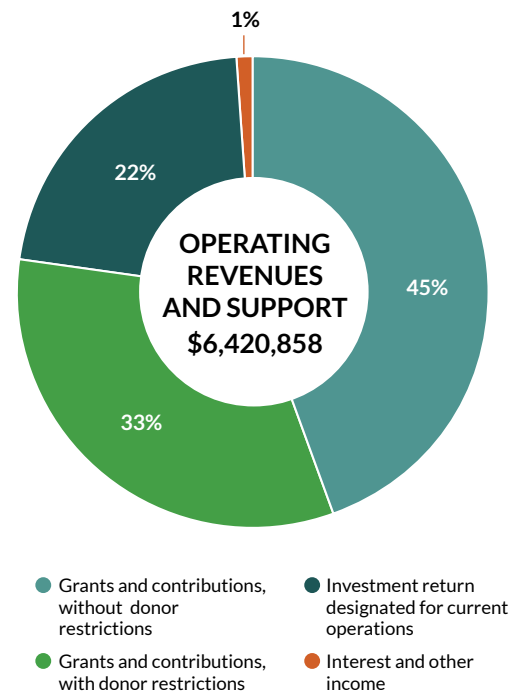
Non-Operating Activities:

Investment return, net	2,808,436
Endowment contributions	120,000
Capital grants	119,089
Investment return designated for current operations	(1,388,572)
Total non-operating expenses	1,658,953

Change in net assets 1,257,330

Net Assets:

Beginning of year	26,272,541
End of year	\$27,529,871



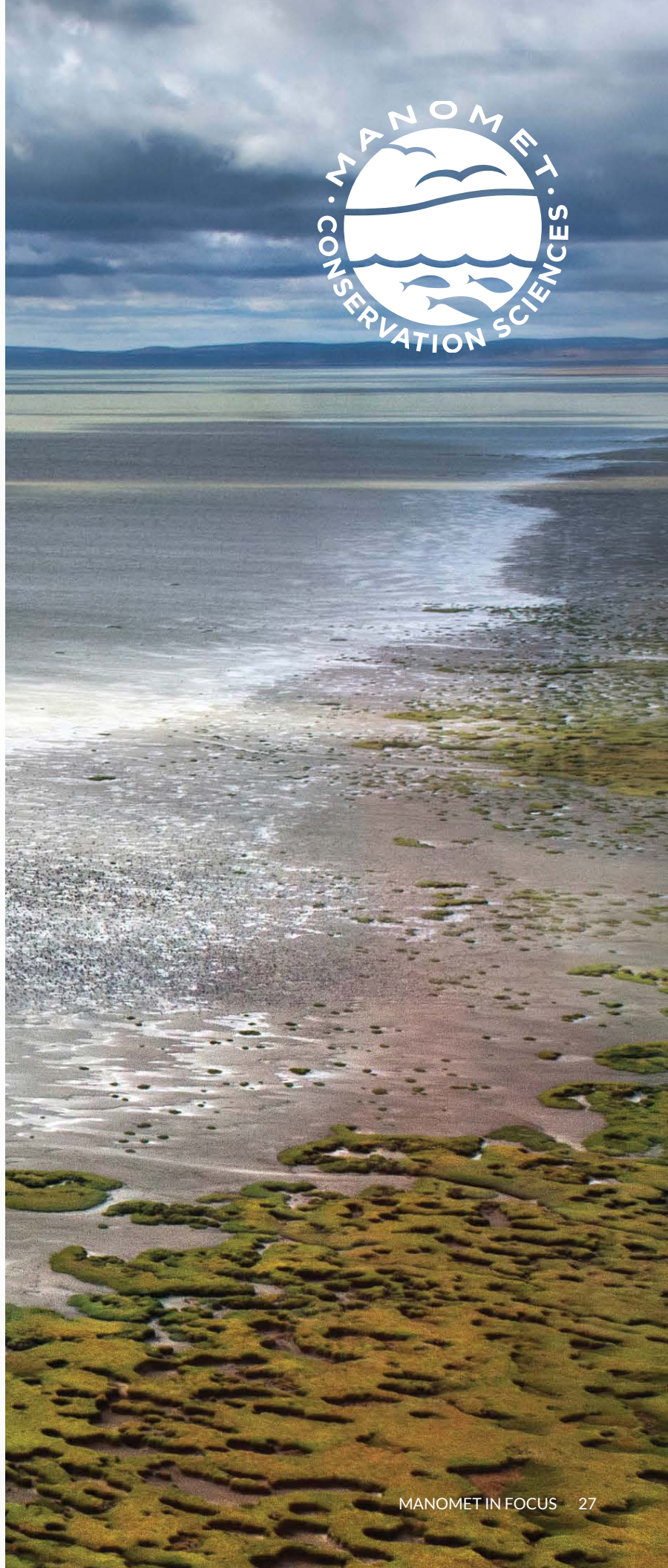
Foundation & Government Supporters

We express our gratitude to the private foundations and government agencies whose generous contributions provided critical support for our mission between October 1, 2022, and September 30, 2023. This supporters report was prepared with great care; however, if errors have occurred, please contact Justin Barrett, Director of Development, at jbarrett@manomet.org.

Adelard A. & Valeda Lea Roy Foundation	George Garretson Wade Charitable Trust #2
Alpha Pension Group	Goldenrod Foundation
Anonymous	Hemenway & Barnes, LLP
BAND Foundation	Hermann Foundation
Bobolink Foundation	Howard W. Maxim Foundation Corporation
Boston Trust Walden Company	Katahdin Forest Management LLC
Buffalo Exchange	Knobloch Family Foundation
Builders Initiative	Lakeview Timber
Bureau of Land Management	LandVest
Cabot Creamery Cooperative, Inc.	Lone Pine
Charles Stanhope Adams Nature Research Foundation	Lukes Liquors
Charles Sumner Bird Foundation	Maine Outdoor Heritage Fund
Coastal Barrier Island Foundaton	Massachusetts Cultural Council
Coastal Heritage Bank	Maine Coastal Program
College of the Atlantic	Maine Community Foundation
Cornell Lab of Ornithology	Maine Shellfish Restoration and Resilience Fund
Davis Conservation Foundation	Manulife
Dinamo Fund	Mennen Environmental Foundation
Doree Taylor Charitable Foundation	Mid-Atlantic Fishery Management Council
Dorr Foundation	National Fish and Wildlife Foundation
DRF Timber, LLC	National Oceanic and Atmospheric Administration
Eaglemere Foundation	New England Forestry Foundation
Edwin F. Gamble Lead Trust	Northwoods Management, LLC
Edwin S. Webster Foundation	Nuttall Ornithological Club
Eleanor G P Robinson Revocable Trust	Oak Mountain Timberlands LLC
Environment and Climate Change Canada	One Hundred Miles
Evergreen II Fund	Pleasant River Lumber
Evergreen Timber, Inc.	
Ferris Olson Family Foundation for Ocean Stewardship	

PwC
P.W. Sprague Memorial Foundation
Regions Bank
R. Howard Dobbs, Jr. Foundation
Roy A. Hunt Foundation
Sea Breeze Foundation
Seven Islands Land Company
Shades Mountain Timberco
State of Maine Department of
Marine Resources
Sweetwater Properties
Tamarack Timber LLC
The Nature Conservancy
The Seth Sprague Educational &
Charitable Foundation
The William P. Wharton Trust
Tracy Aviary Conservation
Truist Financial Corporation
University of Maine
University System of New Hampshire
U.S. Department of Agriculture
U.S. Department of the Interior
(U.S. Fish and Wildlife Service)
Van Liew Trust Company
Wader Quest
Weyerhaeuser Family Foundation, Inc.
Wickwood Timber
Wildlife Conservation Society
William E. Schrafft & Bertha E. Schrafft
Charitable Trust
William S. Brewster 2007 Trust

**And we thank the many generous
individuals and families who have been
the backbone of Manomet's core support
for more than 50 years.**



Institutional Partners

Manomet partners with organizations across the Western Hemisphere to leverage diverse resources, expertise, and networks, fostering greater impact and reach for our collective initiatives. We define institutional partners as organizations: with which we have joint projects or work; to whom we grant or regrant funding; and from whom we receive a grant or regrant that are comfortable having Manomet list them as partners. We express our gratitude to the following current Manomet partners.

Acadian Timber Corp	Belize Audubon Society	Clemson University - Master Naturalist Program	Empresa Nacional del Petróleo (ENAP)
ACE Basin National Estuarine Research Reserve	Berry Islands Council	Coastal Conservation League	Environment Canada
Administración de Parques Nacionales	Bigelow Laboratory for Ocean Sciences	Coastal Expeditions	Eros Oyster
Alaska Department of Fish and Game	BiodiversityWorks	Coastal Rivers Conservation Trust	The Esplanade Association (EA)
Alianza del Pastizal - Aves Uruguay	Birds Georgia	Coastal States Organization	Estepa Viva
America's Boating Club	Black Lives Matter	Coffee Bluff Marina	Falmouth High School
American Bird Conservancy - Motus Wildlife Tracking Network	Boston Shorebirds Group	Cold Spring Elementary School	Feminist Bird Club
American Heritage Girls	Bowdoin College	Collby College	Fight Dirty Tybee
American Shore & Beach Preservation Association (ASBPA)	Bradbury Forest, LLC	College of Coastal Georgia	Freedom Boat Club
Anonymous	Bridgeview Montessori School	College of the Atlantic	Fresh Air Home Tybee
Anti-racist Collective of Avid Birders	Boys and Girls Club of Metro South - Brockton Clubhouse	Comisión de Medio Ambiente - Cámara Diputados	Friends of Casco Bay
Anton de Kom University of Suriname	Brockton High School	Comité ZIP	Friends of Anahuac National Wildlife Refuge
Arcadia Plantation	Brockton Public Library	Comunidad para el Desarrollo Sustentable para la Vida de Sudamérica	Fundación para la Defensa de la Naturaleza (FUDENA)
Arctic Migratory Bird Initiative	Brunswick Marine Resources Committee	Consejo Nacional de Investigaciones Científicas y Técnicas (CONICET)	Fundación Ambiente y Recursos Naturales (FARN)
Arrowsic Shellfish Conservation Committee	Bull River Marina	Conservation of Arctic Flora and Fauna	Fundación Bandada, Chile
Asociación Ambiente Sur	Burger Boat Company	Cooperativa El Puentequito	Fundación Conservación Marina
Asociación Armonía	Burton 4H Center on Tybee Island	Corbidi - Centro de Ornitología y Biodiversidad, Asociación Calidris	Fundación Cosmos
Asociación Calidris	CAMANICA - Nueva Pescanova	Darling Marine Center	Fundación Humedales
Asociación de Productores Salineros de Honduras (ASOPROSALH)	Cambridgeport School	Devonshire Foundation	Fundación Inalafquen
Asociación Guyra Paraguay	Cape Cod Bird Club	Dorr Foundation	Fundación Lagunas Costeras
Asociación Uruguaya de Ganaderos del Pastizal	Casco Bay Estuary Partnership	Downeast Fisheries Partnership	Fundación Líderes Ansenusa
Audubon South Carolina	Centro Bahía Lomas - Universidad Santo Tomás	Downeast Salmon Federation	Fundación Tantí
Aves Argentinas	Corbidi - Centro de Ornitología y Biodiversidad	Duke University	Fundación Yuchan
Aves Honduras (ASHO)	Centro Universitario Regional del Este, Universidad de la República Uruguay	Duxbury Alden School	Foundation for Ecodevelopment and Conservation (FUNDAECO)
Aves y Conservación	Chandler School	Duxbury Beach Reservation	Galveston Bay Foundation
Avon Public Library	Charleston Fossil Adventures	D.W. Field Park	Georgia Department of Natural Resources
Bahamas National Trust	Chatham County Parks & Recreation Department	Eastern Surfing Association - Tybee Island	Georgetown Shellfish Conservation Committee
Basin Oyster Project	City of Brockton, Massachusetts	Emily's Oysters	Georgia Shorebird Alliance
Baskahegan Company	City of Tybee Island - Sustainability Team		Global Information Assurance Certification (GIAC)
Bates College			Glynn County, Georgia - Public Works Department

Gouldsboro Shore	LandVest - Timberland Division	Massachusetts Lobstermen's Association	National Oceanic and Atmospheric Administration (NOAA) - Environmental Literacy Program
Great Bay National Estuarine Research Reserve	Lanes Island Shellfish Latino Outdoors	Massachusetts Master Gardener Association	Native Land Conservancy
Greater Portland Council of Governments	Little St. Simons Island Living Observatory	Meadowbrook School	Nearview, LLC
Green Diamond Resource Company	Lyme Timber Company	Mid-Atlantic Fishery Management Council	New England Forestry Foundation
Green Heritage Fund	Madeleine Point Oyster Farm	Midcoast Conservancy	New Jersey Department of Environmental Protection
Greenwood Plantation	Maine Center for Coastal Fisheries	Ministerio de Ambiente - Uruguay	New Meadows River Shellfish Co-op
Grupo de Estudios en Conservación y Manejo (GEKKO) - Universidad Nacional del Sur	Maine Coast Fishermen's Association	Ministerio de Ambiente y Desarrollo Sostenible - Columbia	NYC Audubon
Grupo Granjas Marinas	Maine Coast Heritage Trust	Ministerio de Ambiente, Agua y Transición Ecológica - Ecuador	Noble and Greenough School
Gulf of Maine Research Institute	Maine Coastal Program	Ministerio de Ganadería, Agricultura y Pesca - Uruguay	North American Banding Council
Gulf of Maine Blue Crab Network	Maine Department of Agriculture, Conservation & Forestry - Maine Forest Service - Maine Geological Survey	Ministerio del Ambiente (MINAM) - Peru	North American Marine Alliance
Hama Hama Oyster Company	Maine Department of Environmental Protection	Ministerio del Medio Ambiente - Chile	North Carolina Department of Environmental Quality- Division of Coastal Management
Hancock Elementary School	Maine Department of Marine Resources	Ministry of Land Policy and Forest Management, Suriname (GBB)	Northeastern University
Harpswell Marine Resources Committee	Maine Maritime Academy	Monarch Joint Venture	Northwestern Peru Mangrove Consortium
Hedge Elementary School	Maine Oyster Company	Mono Lake Committee	Northwoods Management Group
Herring Pond Wampanoag Tribe	Maine Sea Grant	Monomoy Bird Observatory	Nuttall Family Foundation
Hogan's Marina	Maine Shellfish Learning Network	Movimiento Ambientalista No Gubernamental La Educación (MANGLE)	Nuveen, LLC
Horizon Foundation	Maine TREE Foundation	Municipality of Puerto Santa Cruz, Argentina	Oatland Island Wildlife Center
Horseshoe Crab Recovery Coalition	Maine Woodland Owners	Museum of Science, Boston	Ogeechee Audubon Society
Houston Audubon Society	Manomet Elementary School	Myles Standish State Forest	Oikonos
Ilustre Municipalidad de Curepto	Manuthala George Jr. Global Studies School	Nantucket Conservation Foundation	Old Colony Planning Council
Ilustre Municipalidad de Licantén	Manulife Investment Management - Timberland and Agriculture	Nantucket Land Bank	Old Colony YMCA
Indian Brook Elementary School	Marine Biological Laboratory	National Audubon Society - Coastal Georgia Chapter	One Hundred Miles
The Institute for Bird Populations	Marion After School Program	National Audubon Society - Saline Lakes Program	Outdoor Afro
Instituto de Conservación Forestal (ICF)	Maritime Government of Talcahuano	National Fish and Wildlife Foundation	Pacífica by Ensenada Bay - Grupo Inmobiliario
Instituto Plan Agropecuario	Mass Audubon	National Geographic Photography	Partners in Flight
Isle of Hope Marina	Massachusetts Department of Conservation & Recreation	National Institute for Amazon Research (INPA) - Brazil	Paskamansett Bird Club
J.D. Irving, Limited	Massachusetts Department of Environmental Protection	National Institute of Forest Conservation and Development, Protected Areas and Wildlife (ICF)	The Passamaquoddy Tribe at Sipayik
Kelp Ecosystem Ecology Network	Massachusetts Division of Fisheries and Wildlife (MassWildlife)		Peabody Public Schools - Personalized Remote Education Program (P.R.E.P.)
Kennebec Estuary Land Trust	Massachusetts Envirothon		Penikese Island School
Kingston Elementary School			Penobscot Shellfish Conservation Committee
Kingston Intermediate School			

INSTITUTIONAL PARTNERS, CONTINUED

Phippsburg Shellfish Conservation Committee	Sea Meadow Marine Foundation	Theodore Roosevelt Conservation Partnership	U.S. Fish and Wildlife Service
Pinehills Bird Brains	Seajoy Seafood Corporation/ Cooke Inc.	Tidal Bay Consulting	- Alaska Migratory Birds Office
Plymouth Central Intermediate School	Seaweed Commons	Town of Abington, Massachusetts	- Arctic National Wildlife Refuge
Plymouth Public Schools	Serena Golf - Proyecto Inmobiliario	Town of Avon, Massachusetts	- Atlantic Coast Joint Venture
Plymouth South High School	Servicio Nacional de Áreas Naturales Protegidas por el Estado	Town of Orleans, Massachusetts	- Maine Coastal Program
Point Blue Conservation Science	Servicio Nacional Forestal (SERFOR)	Town of Plymouth, Massachusetts	- Monomoy National Wildlife Refuge
Port Blakely	Seven Islands Land Company	The Trustees of Reservations	- Parker River National Wildlife Refuge
Pro Esteros A.C.	Sierra Club	Tufts University	- Savannah National Wildlife Refuge,
Programa de Conservación de la Biodiversidad y Desarrollo Sustentable en los Humedales del Este (PROBIDES)	Silver Lake Regional Middle School	Tumblehome Books	- South Carolina Ecological Services Field Office
Programa de Soluciones Costeras	Sapelo Island National Estuarine Research Reserve (SINERR)	Tybee Island Marina	- Texas Chenier Plain National Wildlife Refuge Complex
Pronatura Sur	SKEO	Tybee Island Marine Science Center	- Wassaw National Wildlife Refuge
Protected Areas and Wildlife, Honduras	Sociedad Audubon de Panamá	Tybee Island Maritime Academy	U.S. Forest Service
Proyecto Global Environment Facility (GEF) - Humedales Costeros	Somes Meynell Wildlife Sanctuary	Tybee Light Sail and Power Squadron	U.S. Geologic Survey
Public Broadcasting Service (PBS) <i>Nature</i>	South Atlantic Salt Marsh Initiative	Unidad Ambiental/Alcaldia de Puerto Morazan	- Alaska Science Center
PwC	South Carolina Coastal Management Program	Universidad Austral	U.S. National Park Service
Quetzalli Nicaragua	South Carolina Department of Natural Resources	University of Connecticut	- Cape Cod National Seashore
R. Howard Dobbs, Jr. Foundation	South Carolina Office of Resilience	University of Costa Rica	- Fort Pulaski National Manument
Raymond Elementary School	Southeastern Massachusetts Pine Barrens Alliance (SEMPBA)	University of Georgia	Utah Rail Passengers Association - Link Utah
Rayonier	South Shore Bird Club	University of Georgia - Marine Extension and Georgia Sea Grant	Verts Rivages
Red de Observadores de Aves y Vida Silvestre de Chile (ROC)	Springtide Seaweed	University of Maine	Viewshed
Redbrook - A.D. Makepeace Resource Management Service	StemNext	University of Massachusetts Amherst	Virginia Tech - Ashley Dayer Human Dimensions Lab
Royal River Fish Passage	Stewards of the Georgia Coast	University of Massachusetts Field Station - Waltham	Wade Institute for Science Education
Safe Harbor Bahia Blue	St. John Paul II Catholic Academy	University of New Hampshire	Wagner Forest Management, Ltd.
Sahlman Seafoods, Inc.	Stonehill College	University of New Hampshire - New Hampshire Sea Grant	Wareham Elementary School
SalvaNATURA	Student Oral Language Observation Matrix (SOLOM)	University of Rhode Island	Wells National Estuarine Research Reserve
San Lorenzo Tourism Committee	Team Zostera	University of Victoria	The Wetlands Institute
Savannah Bend Marina	TERC	U.S. Army Corps of Engineers	Wetlands International
SAVE Brasil	Terra Peninsular	U.S. Army Corps of Engineers – SAD Regional Sediment Management Center of Expertise	Weyerhaeuser
South Carolina Department of Natural Resources - Division of Marine Resources	Texas Water Trade	United States Environmental Protection Agency - Southeast New England Program (SNEP)	Wheaton College
Scarborough Shellfish Conservation Commission	The Nature Conservancy		Western Hemisphere Shorebird Reserve Network (WSHRN)
Scituate High School	- Kansas		WILDCONSCIENCE
	- Maine		Wildlands Trust
	- New Jersey		Wildlife Conservation Society
	- Virginia		Winnegance Oyster Farm
			Yarmouth Shellfish Conservation Commission

Ways to Give

There are many ways to give to support Manomet's vital work throughout the Americas.

CASH

Gifts can be made by check payable to Manomet, visit manomet.org/donate, or call 508.224.6521 to give by credit/debit card, to set up a monthly gift or request wire transfer instructions.

DONOR ADVISED FUND

A donor advised fund (DAF) is a type of account administered by a third party such as a bank or investment firm (Fidelity, Vanguard, Schwab, etc.) that allows you to combine favorable tax benefits and your philanthropic goals. You may receive a charitable tax deduction at the time cash or other assets are transferred to the DAF. You can then advise that gifts be made to organizations such as Manomet.

IRA CHARITABLE ROLLOVER

If you are 70½ or older and have an Individual Retirement Account (IRA), you can make a Qualified Charitable Distribution of up to \$105,000 (in 2024) annually from your IRA to Manomet without incurring tax on the distribution. This amount is excluded from your adjusted gross income and may count toward any annual Required Minimum Distribution (RMD). Speak with your financial advisor or accountant for complete details and ask them if giving directly from your IRA makes sense for you.



SECURITIES

It may be advantageous to fund a gift with publicly-traded securities that have increased in value and that you have owned more than one year. Please ask your stockbroker or advisor to send your gift to Manomet using the following information:

Broker: SEI Private Trust Company

Contact:

Heidi A. Bastek

Investment and Trust Administrator

(781) 982-6773

heidi.bastek@rocklandtrust.com

DTC Number: 2663

Account #: 12013201

Account Name: Manomet, Inc.

Tax ID: 22-3051362

Please contact Justin Barrett at 508.224.6521, ext. 237 or jbarrett@manomet.org to let him know of your stock transfer and any special designation for your gift so we can appropriately credit and acknowledge your generosity. Sometimes shares arrive without donor name, so this is an important step.

ESTATE GIFTS

Like many organizations, Manomet's reserve funds have been built primarily via thoughtful estate gifts. With a bequest, you're in control. You retain your assets during your lifetime, and you can change your mind at any time. You can remember Manomet in your will or living trust or leave a portion of your life insurance or remainder of an IRA or other retirement plan account using our suggested bequest language:

"I give _____ (all or part of the residue, percentage, or specific amount) to Manomet, Inc., having its principal office at 125 Manomet Point Road, Plymouth, MA 02360, for its general purposes."
Tax ID: 22-3051362

Those who inform Manomet of an intended estate gift will be welcomed into the *Widewater Society*, joining other dedicated supporters.

OTHER WAYS TO GIVE

Many forms of property, including marketable real estate, can make great gifts to further Manomet's mission. There are also ways to give via charitable trusts that can provide income to the donor or another person for life or a fixed term of years. To learn more, please contact Justin Barrett at 508.224.6521, ext. 237 or jbarrett@manomet.org.

THANK YOU!

PHOTO CREDITS

Cover: Manomet/Brad Winn

Inside cover: Manomet/Shiloh Schulte

Page 4: SRP Staff, Manomet/Andrea Ferreira, Antonio Larrea

Page 7: SRP Staff, SRP Staff, Manomet/Juanita Fonseca/Antonio Larrea

Page 8: Manomet/Shiloh Schlute, Manomet/Juanita Fonseca

Page 11: Damian Maestri

Page 12: Mariano Micheluzzi, SRP Staff, Manomet/Brad Winn

Page 15: Manomet/Emily Farr

Page 16: Manomet/Mike Molnar

Page 19: Manomet/Evan Dalton

Page 20: Manomet/Molly Jacobs, Manomet/Claire Cunningham, Natalie Pohl

Page 25: Manomet/Brad Winn

Page 26 & 27: SRP Staff

Pages 32 & 33: Antonio Larrea

Pages 34: Manomet/Brad Winn

CONTRIBUTORS: Special thanks to our Manomet teams across the Western Hemisphere — from laptops to lagoons, from marshes to mudflats — for contributing to this report.

DESIGN: Cheri Natalino, CLN Design

EDITOR: Jeanne O'Rourke, Senior Director, Marketing Communications



Manomet Board of Trustees 2023-2024

Nancy Dempze (Chair)

Dan Sarles (Vice-Chair)

Dave Bryan (Secretary)

Michael Taubenberger (Treasurer)

Louise Conant

Molly Cornell

Dwight DeMay

Andy Falender

Sarah Groves

Alicemarie Hand

Brian Harrington

Deb Harrison

Sophie Hollingsworth

Weston (Tony) Howland, III

Rob Kluin

Barbara McMillan

Martha Piper

Dean Steeger

Rosa Maria Vidal

Paddy Wade*

**Deceased*

Manomet Councilors 2023-2024

Loring Conant, Jr., M.D.
Paul Dobbins
David Ellis
Kathy Emrich
Boynton Glidden, III
George Gregory
Paul Hagen
Stacia Hendricks
Emily Nash Hunnewell
Laura Johnson
Allie Walker Loehlin
Jim Loehlin, Ph.D.
Sonia Loizeaux
Gwyn Loud (Co-Chair)
Jo-Ann Lovejoy
Ginny Murray
Jeff Peters
Stew Sanders
John Sharp
Millie Solomon
Martha Stearns
Brooke Stevens
Jean-François Timmers
Jill Whiting
Deborah Dantzler Williams

Manomet Life Trustees 2023-2024

Pete Bennett
Dick Chute
Gene Doggett
John C. Fuller
Anne & Walter Gamble
John C. Kricher, Ph.D.
Doug Rhodes
Hanson C. Robbins
Harry Sears, M.D.
Nancy B. Soulette

Manomet Leadership

Elizabeth Schueler
President
Dr. Stephen Brown
Vice President, Science
Dr. Rob Clay
Vice President, Flyways
Dr. Molly Jacobs
Vice President for Environmental
Education and Outreach
Timothy Sharpe
Vice President, Philanthropy
Brad Winn
Vice President, Resilient Habitats





Notes

manomet.org
P.O. Box 1770
Manomet, MA 02345

